



# Ramsey Winch Company Owner's Manual Front Mount Electric Winch Triple X with synthetic rope 12 volt



*Fairlead does not mount directly to winch.  
Mounting plate for display only.*

Layer of Rope	1	2	3	4
Rated Line Pull Per Layer (lbs)	6,000	4,700	3,900	3,300
(kg)	2,720	2,130	1,760	1,490
Cumulative Rope Capacity Per Layer (ft)*	5	15	25	35
(m)*	1	4	7	10

Line Pull First Layer (lbs)	NO LOAD	1,000	3,000	5,000	6,000
(kg)		450	1,350	2,260	2,720
Line Speed First Layer (FPM)	45	23	20	14	12
(MPM)	13.7	7	6.1	4.3	3.7
Amp Draw 12V	100	200	270	350	405

\* Depends on rope being uniformly wound onto drum. (3/8" x 35' Synthetic Rope)

## Congratulations

You have purchased the finest winch available in its service class. It features a highly efficient 3 stage planetary gear set which transmits torque from a series wound DC motor. A safe positive clutch allows free spooling for quick rope deployment. An automatic load holding brake is designed to hold the fully rated capacity of the winch. It was designed and manufactured to provide you with the utmost in utility. As with any device that combines power and movement in its use, there are dangers if improperly used. At the same time, there are easier ways for getting the job done if certain precautions are taken first.

Please read this manual carefully. It contains useful ideas in obtaining the most efficient operation from your Ramsey Winch and safety procedures you need to know before beginning use. When you follow our guidelines for operation, your Ramsey Winch will give you many years of satisfying service. Thank you for choosing Ramsey. You will be glad you have one working for you.

## Contents

Performance Specifications	Front Cover
Safety Precautions	2
Tips for Safe Operation	2
Techniques of Operation	3
Installation	4-5
Electrical Connections and Operation	5
Mounting Information	6
Operating Instructions	8
Maintenance	8
Troubleshooting Guide	9
Replacement Rope Installation	10
Rope Inspection	11
Winch Parts List	12-13
Warranty	Back Cover

**Please note:** Ramsey Triple X winches are designed for front mount vehicle use. The winches are not designed for and should not be used in industrial applications (car haulers/carriers, wreckers, hoisting, etc.), and Ramsey does not warrant them to be suitable for such use. Ramsey makes a separate, complete line of winches for industrial/commercial use. Please contact the factory for further information.



**CAUTION: Read and understand this manual before installation and operation of winch. See Safety Precautions!**



## Safety Precautions

### To Guard against Possible Injury...

***A minimum of eight wraps of rope around the drum barrel is necessary to hold the rated load. Rope anchor is not designed to hold the load.***

- A. Keep yourself and others a safe distance to the side of the rope when pulling under load.
- B. Do not step over the rope or near the rope under load.
- C. Use supplied hook strap when handling hook for spooling rope.
- D. Do not move the vehicle to pull a load on the winch rope. This could result in rope breakage and/or winch damage.
- E. Apply blocks to wheels when vehicle is on an incline.
- F. Winch clutch should be disengaged when winch is not in use and fully engaged when in use.
- G. Modification, alteration, or deviation to the winch should only be made by Ramsey Winch Company.
- H. Keep the duration of your pulls as short as possible. If the motor becomes uncomfortably hot to the touch, stop and let it cool for a few minutes. Do not pull more than one minute at or near rated load. Do not maintain power to the winch if the motor stalls. Electric winches are for intermittent usage and should not be used in constant duty applications.
- I. Disconnect the remote control switch from the winch when not in use. A Ramsey Part No. 282053 safety on-off switch in your vehicle is recommended.
- J. NOTE: Do not use winch in hoisting applications due to required hoist safety factors and features.
- K. Do not exceed maximum line pull ratings shown in tables. Shock loads must not exceed these ratings.
- L. To respool correctly, it is necessary to keep a slight load on the rope. This can be accomplished by holding the rope with one hand and the remote control switch with the other, starting as far back and in the center as you can, walking up keeping load on the rope as the winch is powered in. Do not allow the rope to slip through your hand and do not approach the winch too closely. Turn off the winch and repeat the procedure until all the rope except a few feet is in. Disconnect the remote control switch and finish spooling in rope by rotating the drum by hand with clutch disengaged. On hidden winches, spool in rope under power using supplied hook strap.
- M. Avoid pulling rope over rough surfaces or sharp edges. Slide the protective sleeve along the length of the rope to place it at a location where the rope would encounter rough surfaces such as a rock or tree branches.

## Tips for Safe Operation

Don't underestimate the potential danger in winching operations. Neither should you fear them. Do learn the basic dangers and avoid them.

Observe the spooling of rope onto drum. Side pulls can cause rope to pileup at one end of the drum. To correct uneven stacking, spool out that section of the rope and move it to the other end of the drum and continue winching. Uneven spooling which causes rope pileup can interfere with the tie bars causing damage to the winch.

Store the remote control switch inside your vehicle where it will not become damaged. Inspect it before you plug it in.

When ready to begin spooling in, plug in remote control switch with clutch disengaged. Do not engage clutch with motor running.

Never connect the hook back to the rope. This can cause rope damage. Always use a sling or chain of suitable strength, as shown in the illustration.

Observe your winch while winching, if possible, while standing at a safe distance. If you use vehicle drive to assist, stop and get out every few feet to assure the rope is not piling up in one corner. Jamming rope can break your winch.

Do not attach tow hooks to winch mounting apparatus. They must attach to vehicle frame.

When double lining during stationary winching, the winch hook should be attached to the chassis of the vehicle.

Since the greatest pulling power is achieved on the innermost layer of your winch, it is desirable to pull off as much line as you can for heavy pulls. If this is not practical, use a snatch block and double the arrangement (see illustration).

Neat, tight spooling avoids rope binding which is caused when a load is applied and the rope is pinched between two others. If this happens, alternately power the winch in and out a few inches. Do not attempt to work a bound rope under load free by hand.

Do not expose the rope to chemicals or heat sources.

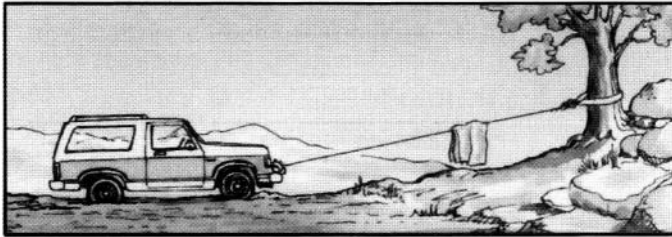
Avoid prolonged exposure of synthetic rope to ultraviolet rays from sunlight which can degrade rope strength over time. Use a winch cover over winch and rope when not in use.

Any sharp bend in the rope under load decreases its strength substantially and may cause permanent damage or failure. Sheave diameters on rotating snatch blocks should be at least eight times the rope diameter (3" for 3/8" rope).

## Techniques of Operation

The best way to get acquainted with how your winch operates is to make a few test runs before you actually need to use it. Plan your test in advance. Remember you hear your winch as well as see it operate. Get to recognize the sound of a light steady pull, a heavy pull, and sounds caused by load jerking or shifting. Soon you will gain confidence in operating your winch and its use will become second nature with you.

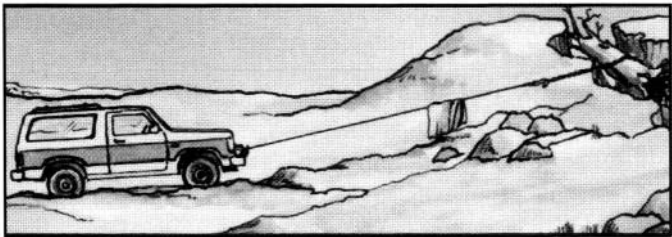
Your winch will not only pull your vehicle up or ease your vehicle down a steep grade, it will also pull another vehicle or a load while your vehicle is anchored in a stationary position. The sketches on this page show you a few techniques.



*For basic self-recovery, anchor to a tree or heavy rock. When anchoring to a tree, always use a tree trunk protector.*



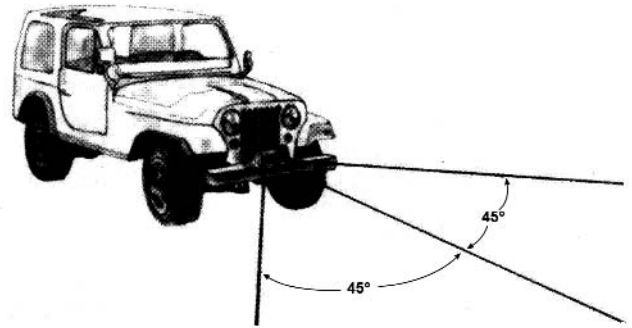
*Stakes driven in solid earth and chained together make a good anchor point for self-recovery when no solid anchor point is available.*



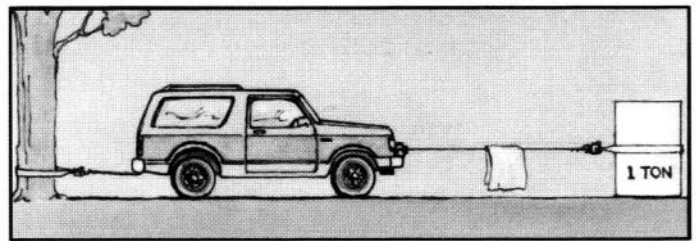
*For a solid anchor, bury a log with earth or sand or place it in a deep ravine.*

When pulling a heavy load, place a blanket, jacket or tarpaulin over the rope five or six feet from the hook. It will slow the snap back in the event of a broken rope. Also, open the vehicle hood for additional protection.

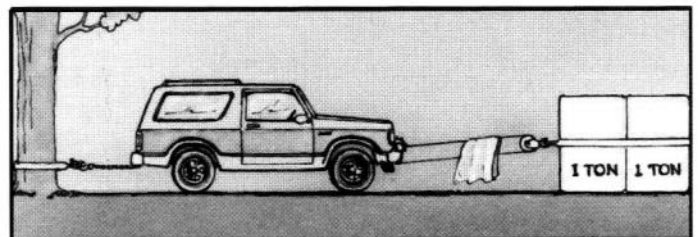
Use the vehicle wheel power to help the winch, but don't overtake the winch line. Plan your pull. You can't always hook up and pull out in one step. Examine all the areas for anchoring possibilities as well as leverage situations, direction, and goal.



*Winches equipped with fairleads can pull from several directions. Pull from an angle only to straighten up the vehicle—otherwise you can damage structural members or other parts of your vehicle and cause excess rope buildup on one end of the winch drum.*



*For a direct pull of 2000 lbs., hitch truck to a tree or solid anchor, and take out of gear.*



*To double the pull, use 2-part line and tie off to chassis. Take out of gear.*

## Installation

The winch shown in this owner's manual is solely and exclusively designed for vehicle mounted, non-industrial applications. All other applications will void warranty.

It is very important that the winch be mounted on a flat surface so that the three major sections (the motor end, the drum, and the gear housing end) are properly aligned.

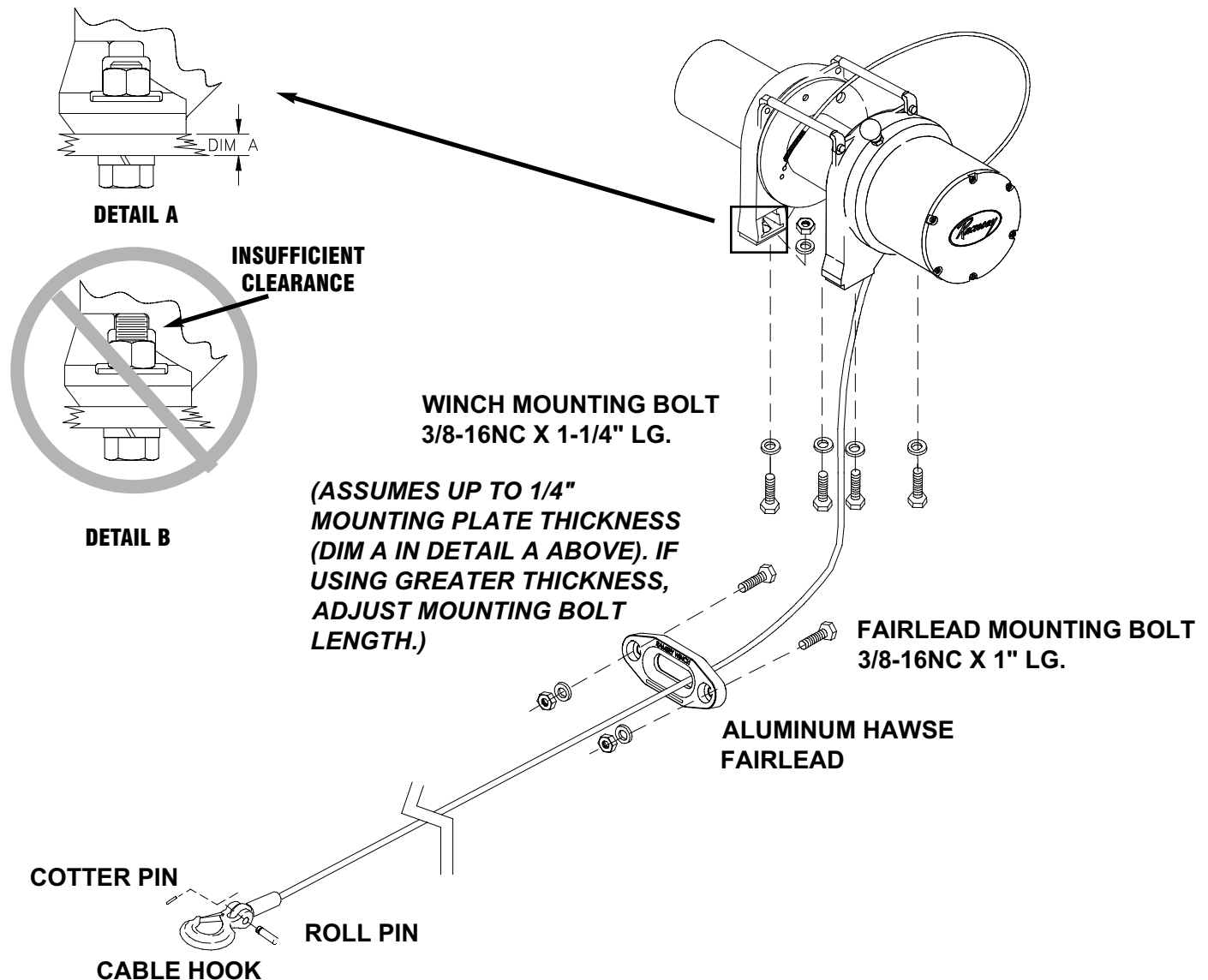
The Aluminum Hawse Fairlead included with the winch is required for use with the synthetic rope.

Attach aluminum hawse fairlead to channel using hardware furnished with winch. Attach winch to channel. Thread capscrews with lockwashers through mounting holes in mounting surface and into winch feet (see figure below).

Refer to diagrams on the opposite page for mounting information. Tighten all winch mounting bolts to 34 ft-lbs. torque.

Substitution of attaching hardware items (bolts, nuts or washers) different from those supplied with your winch and mounting kit can lead to failure causing damage or serious injury (use SAE grade 5 bolts or better).

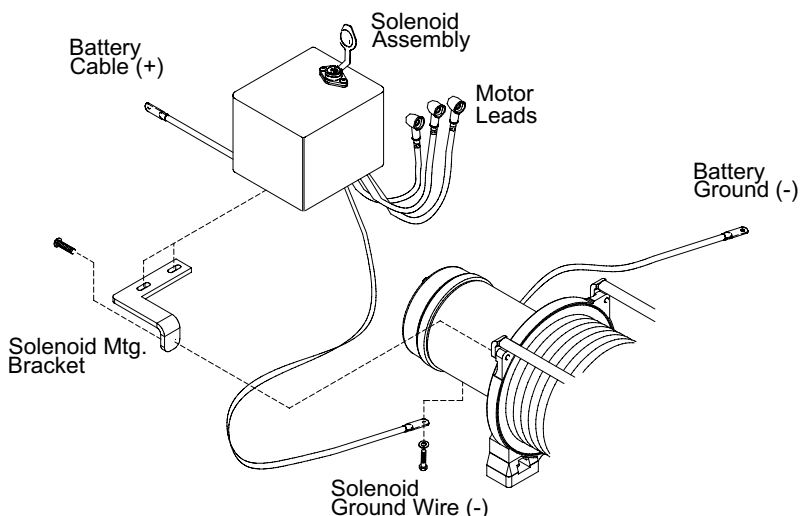
Place end of rope through fairlead and attach hook. Use roll pin and cotter pin (see figure below).



To mount Solenoid Assembly, use included Solenoid Mounting bracket. Attach bracket to tie bar using (1) 1/4-20NC x 1" capscrew in place of the 3/4" tie bar capscrew. Install bracket to back of solenoid using included nuts and lockwashers.

Solenoid can also be mounted remotely next to winch. Refer to mounting information on page 6.

When mounting winch, connect labeled motor leads coming from solenoid assembly to appropriately marked motor terminals as shown at lower right. Tighten nuts on motor terminals securely. Attach solenoid ground wire to ground bolt located on bottom of motor (Battery ground wire is already installed to grounding bolt on motor).

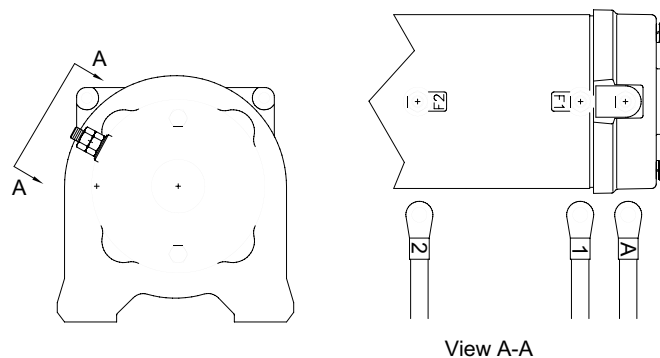


## Electrical Connections and Operations

For normal self-recovery work, your existing electrical system is adequate. Your battery must be kept in good condition. A fully charged battery and proper connections are essential. Run the vehicle engine during winching operations to keep battery charged.

Route battery cables up to battery.

Connect red cable to positive (+) battery terminal. Connect black ground cable to negative (-) terminal of battery.

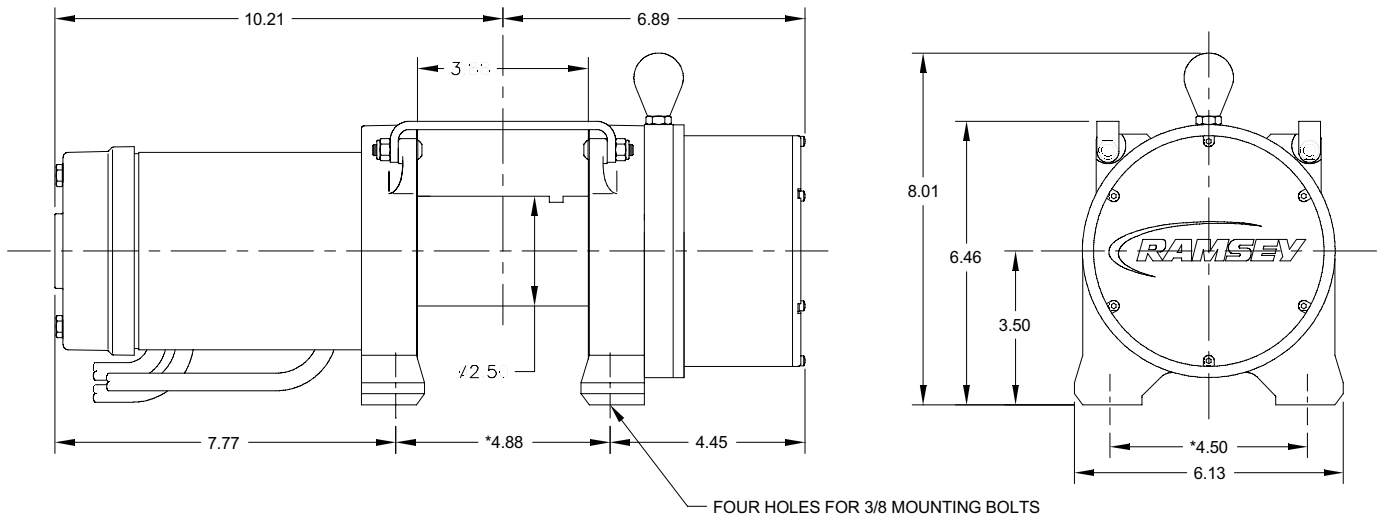


**CAUTION: BE SURE BATTERY CABLES ARE NOT DRAWN TAUT ACROSS ANY SURFACES WHICH COULD POSSIBLY DAMAGE THEM.**

The remote control switch is water proof. It has push buttons on either side. Make sure the motor has stopped fully before reversing. To actuate winch simply plug remote control switch into receptacle in cover of solenoid. Run winch forward and reverse to check directions. Snap appropriate "IN" and "OUT" disc into proper thumb cavity. **Do not leave switch plugged in when winch is not in use.**

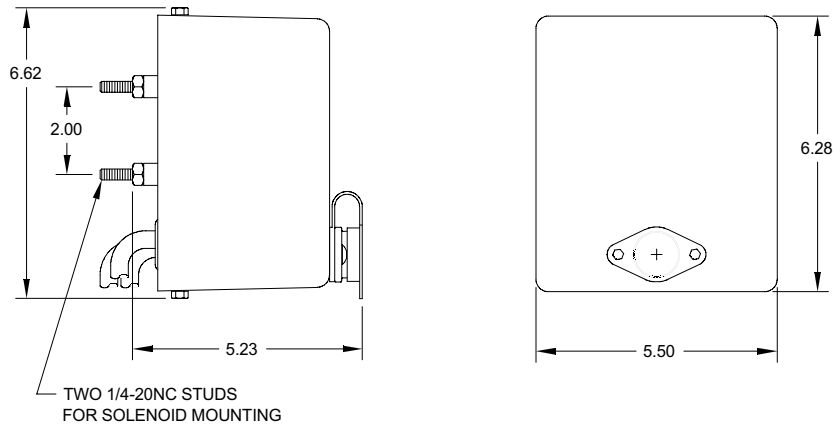
# Mounting Information

## WINCH

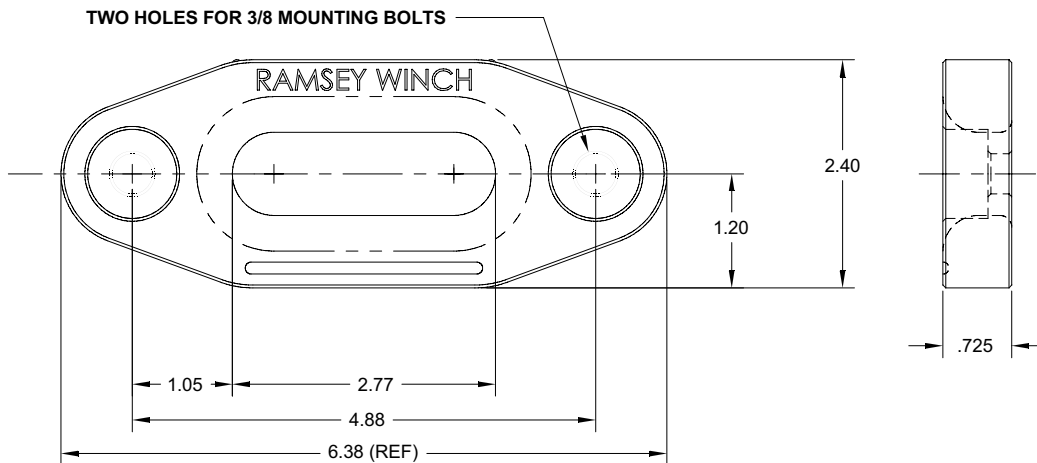


MOUNTING BOLT PATTERN:  
 FOUR Ø.41 HOLES IN A 4.875±.015 x 4.50±.015 RECTANGULAR PATTERN.

## SOLENOID



## FAIRLEAD



## NOTES

## Operating Instructions

The winch clutch allows rapid unspooling of the rope for hooking onto the load or anchor point. The clutch is operated by the shifter knob located on the gear housing end of the winch as follows:

1. To disengage the clutch, move the clutch shifter knob to the “OUT” position. Rope may now be freespoiled off the drum.
2. To engage the clutch, move the clutch shifter knob into the “IN” position. The winch is now ready for pulling.

## MAINTENANCE

All moving parts are permanently lubricated with high temperature lithium grease at the time of assembly. Under normal conditions factory lubrication will suffice.

Corrosion on electrical connections will reduce performance or may cause a short. Clean all connections especially in remote control switch and receptacle. In salty environments use a silicone sealer to protect from corrosion.

To minimize corrosion of the internal motor components that may occur due to condensation, power the winch in or out periodically. Energizing the motor will generate heat, which will help dissipate any moisture buildup in the motor. This should be performed at periodic intervals (such as with each oil change of your vehicle). **Note:** Refer to the Troubleshooting Guide if the motor has been submerged.

## Rope Maintenance

The most important part of maintenance of the synthetic rope is to inspect it regularly. Any time the winch is used, the synthetic rope should be inspected thoroughly as described on page 11.

Likewise, inspect the protective sleeve and replace if it becomes torn, fused, or threadbare.

Keep the rope and protective sleeve free of moisture, grease, dirt or other debris. If necessary, clean with a damp cloth.



## Troubleshooting Guide

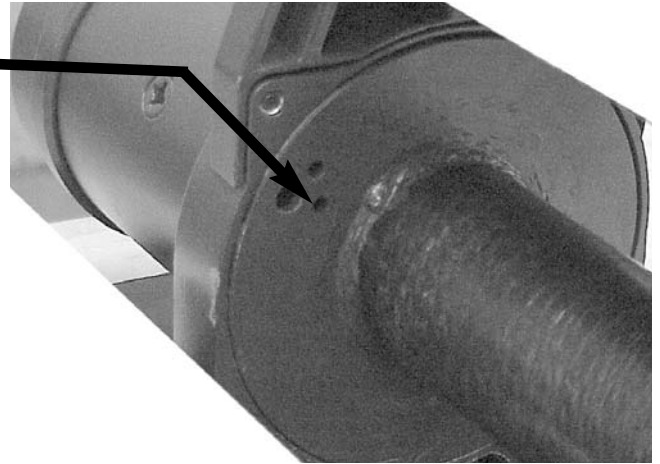
Condition	Possible Cause	Correction
MOTOR RUNS IN ONLY ONE DIRECTION	Defective or stuck solenoid  Defective remote control switch	Jar each solenoid to free contacts. Check each solenoid by applying 12 volts to coil terminal (it should make an audible click when energized).  Disengage winch clutch, remove remote control switch plug from the socket and jump pins at 8 and 4 o'clock. Motor should run. Jump pins at 8 and 10 o'clock. Motor should run.
MOTOR RUNS EXTREMELY HOT	Long period of operation  Insufficient battery	Cooling off periods are essential to prevent overheating.  Check battery terminal voltage under load. If 10 volts or less, replace or parallel another battery to it.
MOTOR RUNS, BUT WITH INSUFFICIENT POWER, OR WITH LOW LINE SPEED.	Bad connection  Insufficient charging system	Check battery cable for corrosion; clean and grease.  Replace with larger capacity charging system
MOTOR RUNS, BUT DRUM DOES NOT TURN	Clutch not engaged	If clutch engaged but symptom still exists, it will be necessary to disassemble winch to determine cause and repair.
MOTOR WILL NOT OPERATE	Loose Connections  Defective or stuck solenoid  Defective remote control switch  Defective motor	Tighten connections on bottom side of hood and on motor.  Jar each solenoid to free contacts. Check each solenoid by applying 12 volts to coil terminal (it should make an audible click when energized).  Disengage winch clutch, remove remote control switch plug from the socket and jump pins at 8 and 4 o'clock. Motor should run. Jump pins at 8 and 10 o'clock. Motor should run.  If solenoids operate, check for voltage at motor leads; if there is power to the leads, replace motor.
MOTOR WATER DAMAGED	Submerged in water or water from high pressure car wash	Allow to drain and dry thoroughly, then run motor without load in short bursts to dry windings.

## Replacement Rope Installation

### Notes:

- Rope should be installed so that it feeds from the bottom of the drum. Rope anchor should be installed on the motor end drum flange, as shown below.
- An Aluminum Hawse Fairlead, P/N 251267 (included with winch), is required for use with the Ramsey Synthetic Rope.
- Before installing synthetic rope, inspect winch drum and fairlead and smooth any sharp edges on drum barrel, flanges and other winch accessories that may contact the rope.

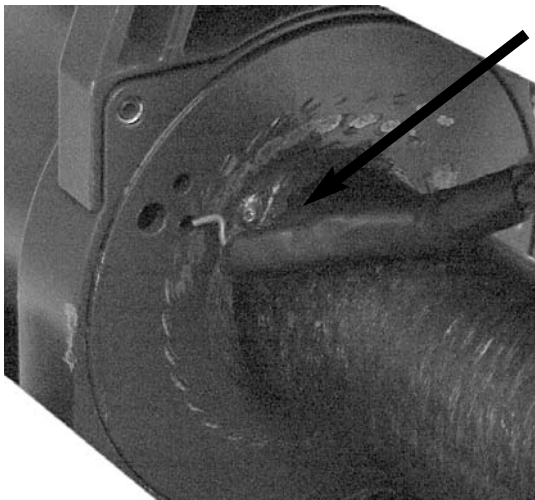
1. Unwind new rope by rolling it out along the ground.
2. Remove existing rope, noting how it is installed in the drum.
3. Rotate drum to locate existing hole in flange that is closest to the drum barrel.



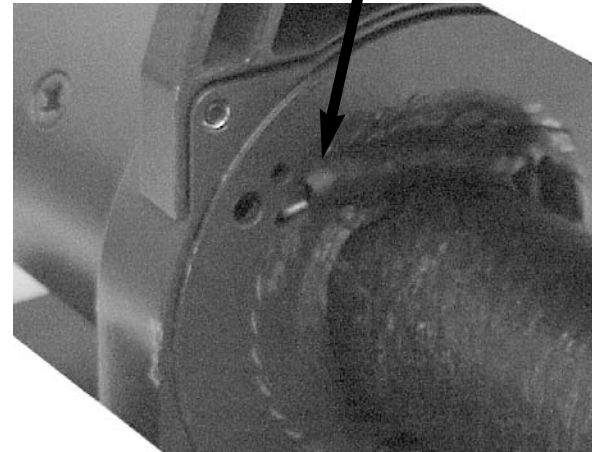
4. Feed synthetic rope through aluminum hawse fairlead and under drum. See figure page 4.

**NOTE: Install rope anchor into hole in flange on motor end of drum only.**

Pull synthetic rope tight to seat anchor in hole.



5. Insert synthetic rope anchor into hole in flange closest to drum barrel.



6. Carefully run winch in the “reel-in” direction. Wear gloves and use the hook strap, keep tension on end of rope as you spool all the rope onto the drum, taking care to form neatly wrapped layers.

## Rope Inspection

When rope is first used, the outer filaments of the rope will quickly fuzz up. This is the result of these filaments breaking and this roughened surface will actually protect the fibers underneath. The condition should stabilize, not progress. If the surface roughness increases, excessive abrasion is taking place and strength is being lost.

Look closely at both the inner and outer fibers. When either is worn the rope is obviously weakened. Open the strands and look for powdered fiber--this is a sign of internal wear.

### Rope should be replaced when

- **Rope bulk anywhere along the length is reduced by 25% or more by abrasion**
- **Two or more adjacent strands are cut.**
- **Flat areas or lumps are found that are not eliminated by flexing rope.**
- **Excessive fused or melted fibers are found. Any such areas will be stiff and the rope will have a glazed appearance.**

### Examples:



Rope with original bulk



Rope displaying 25% strand volume reduction from abrasion--**rope should be replaced.**



Rope strand showing full volume



Rope strand reduced by 25% abrasion--**rope should be replaced.**

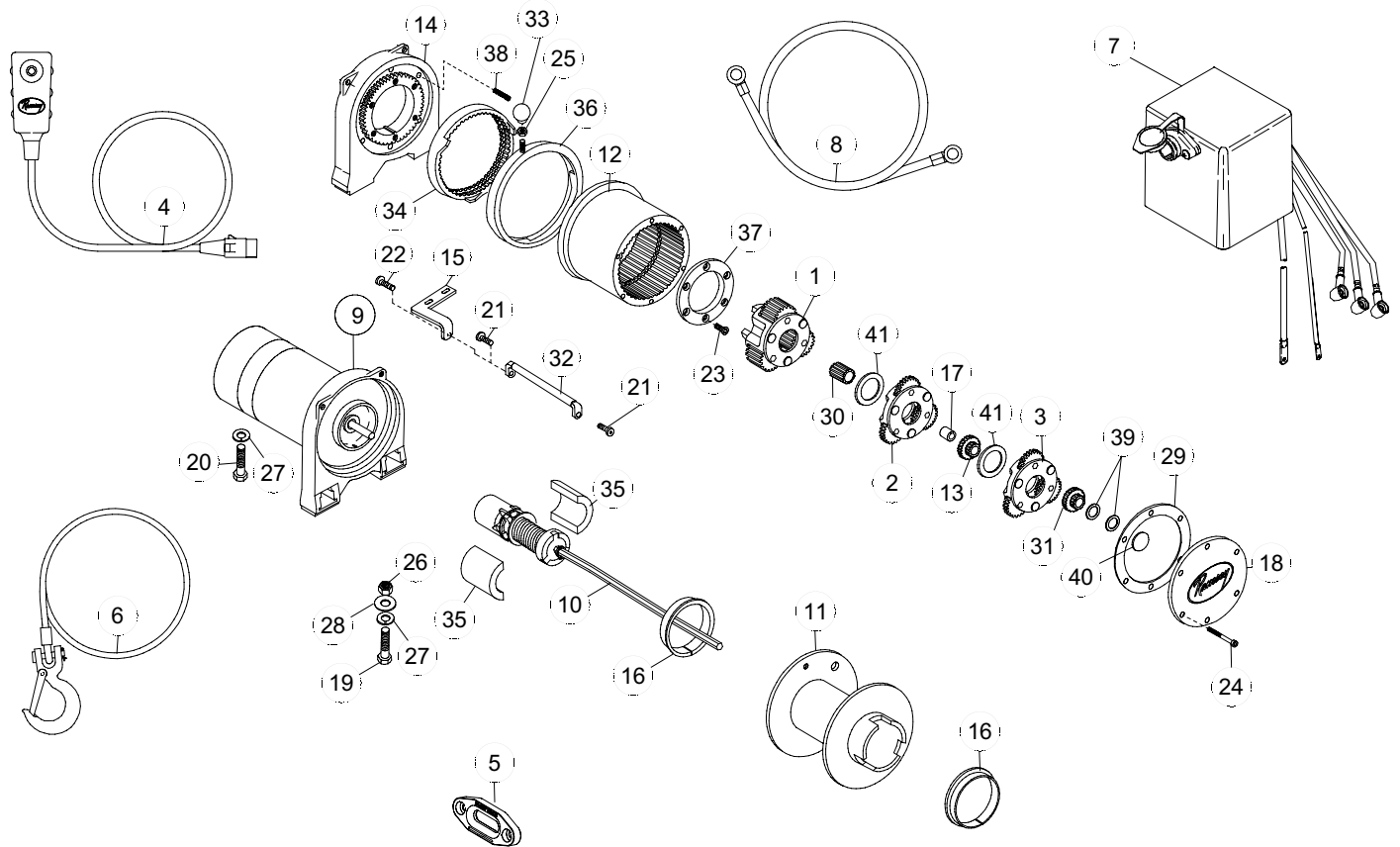


Rope exhibits fiber-set from compression. A slight sheen is visible. This is not a permanent characteristic and can be eliminated by flexing the rope.



Rope displays two adjacent cut strands--**rope should be replaced.**

# Triple X Parts List

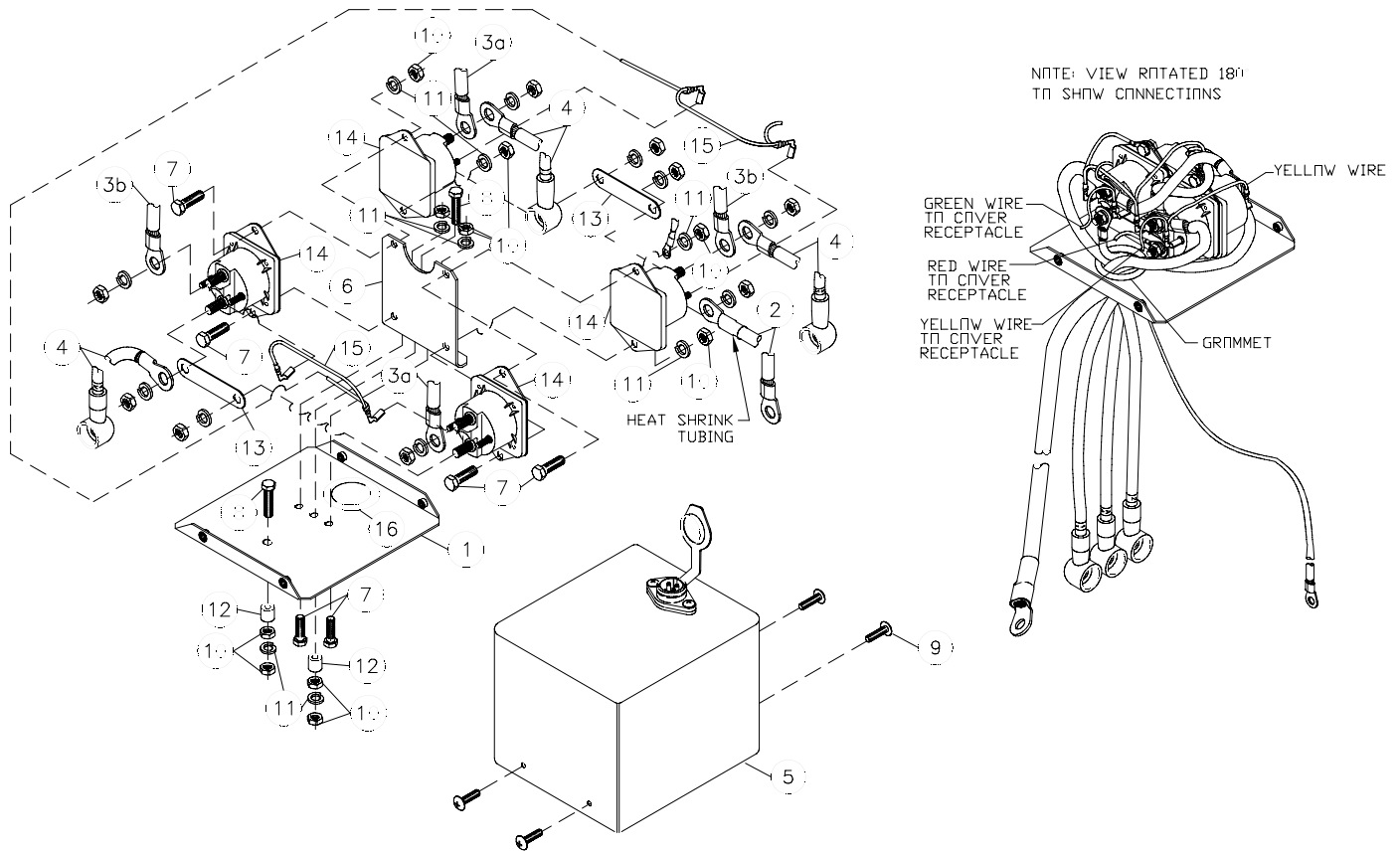


Item No.	Qty.	Part No.	Description	Item No.	Qty.	Part No.	Description
1	1	247006	GEAR CARRIER ASSY - OUTPUT	22	1	414829	CAPSCREW 1/4-20NC X 1" SOC BUTTON HD
2	1	247007	GEAR CARRIER ASSY - INTERMEDIATE	23	6	414861	CAPSCREW 1/4-20NC X 3/4 LG FLAT SOC HD NYLOK
3	1	247024	GEAR CARRIER ASSY - INPUT	24	6	416273	SCREW #6-32NC X 3/8 LG FIL HD F/B
4	1	251110	SWITCH ASSY	25	1	418029	NUT 5/16-18NF HX JAM PLTD
5	1	251267	ALUMINUM HAWSE FAIRLEAD	26	4	418035	NUT 3/8-16NC HX REG PLTD
6	1	251272	ROPE ASSY - 35' X 3/8" DIA	27	5	418177	LOCKWASHER-3/8 ID MED SECT PLTD
7	1	278189	SOLENOID ASSY - 12V	28	4	418181	WASHER-FLAT 3/8 ID SAE PLTD
8	1	289141	CABLE ASSY - GROUND	29	1	442207	GASKET-COVER
9	1	296570	MOTOR-12V	30	1	444048	GEAR-OUTPUT SUN
10	1	296629	BRAKE/SHAFT ASSY	31	1	444097	GEAR-INPUT SUN
11	1	332209	DRUM-CABLE	32	2	448103	TIE BAR
12	1	334143	GEAR-RING	33	1	452001	KNOB-SHIFTER
13	1	334147	GEAR-INTERMEDIATE SUN	34	1	477002	LOCKING RING
14	1	338337	END BEARING-GEAR HOUSING	35	2	477004	RING-HALF
15	1	408315	SOLENOID MOUNTING BRACKET	36	1	477011	CAM RING
16	2	412056	BUSHING-DRUM	37	1	479007	RETAINER-RING GEAR
17	1	412061	BUSHING-SHAFT	38	6	494077	SPRING
18	1	413018	COVER-GEAR HOUSING	39	2	518019	THRUST WASHER
19	4	414316	CAPSCREW 3/8-16NC X 1-1/4 LG HX HD GR5 PLTD	40	1	518027	THRUST DISC
20	1	414370	CAPSCREW 3/8-24NFX X 1/2 HX HD GR5 Z/P	41	2	518020	THRUST WASHER
21	4	414823	CAPSCREW 1/4-20NC X 3/4 LG SOC BUTT HD F/B				

# Solenoid Assembly Parts List

278189 12V

Item No.	Qty.	Part No.	Description	Item No.	Qty.	Part No.	Description
1	1	204281	ASSEMBLY - SOLENOID BRACKET	9	4	416216	SCREW - #10-24NC X 1/2 LG
2	1	289015	ASSEMBLY - WIRE BATTERY CABLE 72" LG	10	10	418014	NUT - HX 1/4-20NC REG Z/P
3	2	289077	ASSEMBLY - WIRE #6 GA X 4.5" BLACK	11	8	418149	LOCKWASHER - 1/4 MED SECT Z/P
4	3	289170	ASSEMBLY - WIRE #2 GA X 29" MTR LEAD	12	2	418514	SPACER - SOLENOID BRACKET
5	1	296594	COVER ASSEMBLY	13	2	440260	STRAP - COPPER
6	1	408271	BRACKET - SOLENOID MOUNTING	14	4	440262	SOLENOID - 12V
7	6	414042	CAPSCREW 1/4-20NC X 5/8" HX HD	15	1	440281	ASSEMBLY - WIRE GROUND
8	2	414062	CAPSCREW 1/4-20NC X 1-1/2" GR5 Z/P	16	1	472069	GROMMET







## Warranty Information

Ramsey Winches are designed and built to exacting specifications. Care and skill go into every winch we make. If the need should arise, warranty procedure is outlined on the back of your self-addressed postage paid warranty card. Please read and fill out the enclosed warranty card and send it to Ramsey Winch Company. If you have problems with your winch, please follow instructions for proper service on all warranty claims.

### Limited Lifetime Warranty

Ramsey Winch offers a limited lifetime warranty for each new Ramsey consumer/RV winch against manufacturing defects in workmanship and materials on all mechanical components.

Warranty registration cards for each winch must be submitted at the time of purchase or within 30 days. Warranty will only be valid for the original purchase of the winch and installed on the vehicles with which they were originally registered.

New synthetic rope assemblies are warranted against defects in workmanship and materials. No warranty applies after initial use.

All Ramsey mounting kits and other accessories carry a 1-year limited warranty against defects in material and workmanship.

This warranty is void if winch is used in commercial/industrial applications other than front mount self-recovery.

Electrical components consisting of motors, solenoids, wiring, wire connectors and associated parts carry a 1-year limited warranty. Battery isolators carry a 90-day limited warranty.

The obligation under this Warranty, statutory or otherwise, is limited to the replacement or repair at the manufacturer's factory, or at a point designated by the manufacturer, upon inspection of such part, to have been defective in material or workmanship. This Warranty does not obligate Ramsey Winch Company to bear the cost of transportation charges in connection with the replacement or repair of defective parts, nor shall it apply to a product upon which repairs or alterations have been made, unless authorized by the manufacturer, or for equipment misused, neglected, or improperly installed.

**IMPORTANT NOTICE: To the fullest extent permitted by applicable law, the following are hereby excluded and disclaimed: 1. All warranties of fitness for a particular purpose; 2. All warranties of merchantability; 3. All claims for consequential or incidental damages. There are no warranties that extend beyond the description that appears on the face hereof.**

**Some states do not allow the above exclusions or disclaimers in consumer transactions and as such this disclaimer/exclusion may not apply to your particular case.**

To the extent such warranties of fitness for a particular purpose or merchantability are deemed to apply to this product, they exist for only so long as the express limited warranty elsewhere set forth is in existence.

Ramsey Winch Company makes no warranty in respect to accessories, same being subject to the warranties of their respective manufacturers.

Ramsey Winch Company, whose policy is one of continuous product improvement, reserves the right improve any product through changes in design and materials as it may deem desirable without being obligated to incorporate such changes in products of previous manufacture.

If field service at the request of the buyer is rendered and the fault is found not to be with Ramsey Winch Company's product, the buyer shall pay the time and expense cost of the field representative. Bills for service, labor, or other expenses which have been incurred by the buyer without express approval or authorization by Ramsey Winch Company will not be accepted.

This warranty gives you specific legal rights and you may also have other legal rights which vary from state to state.



## Ramsey Winch Company

P.O. Box 581510 - Tulsa, OK 74158-1510 USA - Phone: (918) 438-2760 - Fax (918) 438-6688

Visit us at <http://www.ramsey.com>

OM-914158-0805-D